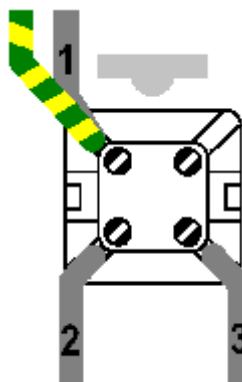
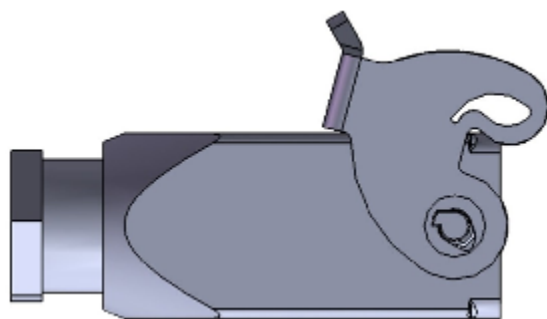
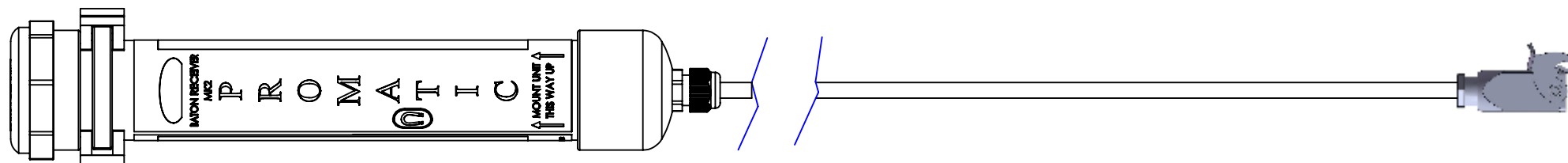


Wiring guide: Promatic Radios (Baton Receiver) ILME 4 PinPlug



Wiring side of plug

- Pin 1 - No. 1 & Green/Yellow
- Pin 2 - No. 2
- Pin 3 - No. 3
- Pin 4 - Not connected

Note: Pin 4 marked \perp

Promatic International Ltd.
Hooton Road
Hooton
South Wirral
CH66 7PA
www.promatic.co.uk
Helpline: 44 (0)151 327 2220

Promatic Inc.
801, Mid America Drive,
Plattsburg,
MO 64477
USA
Website: www.promatic.biz
Helpline: 1 888 767 2529 (Toll free)

